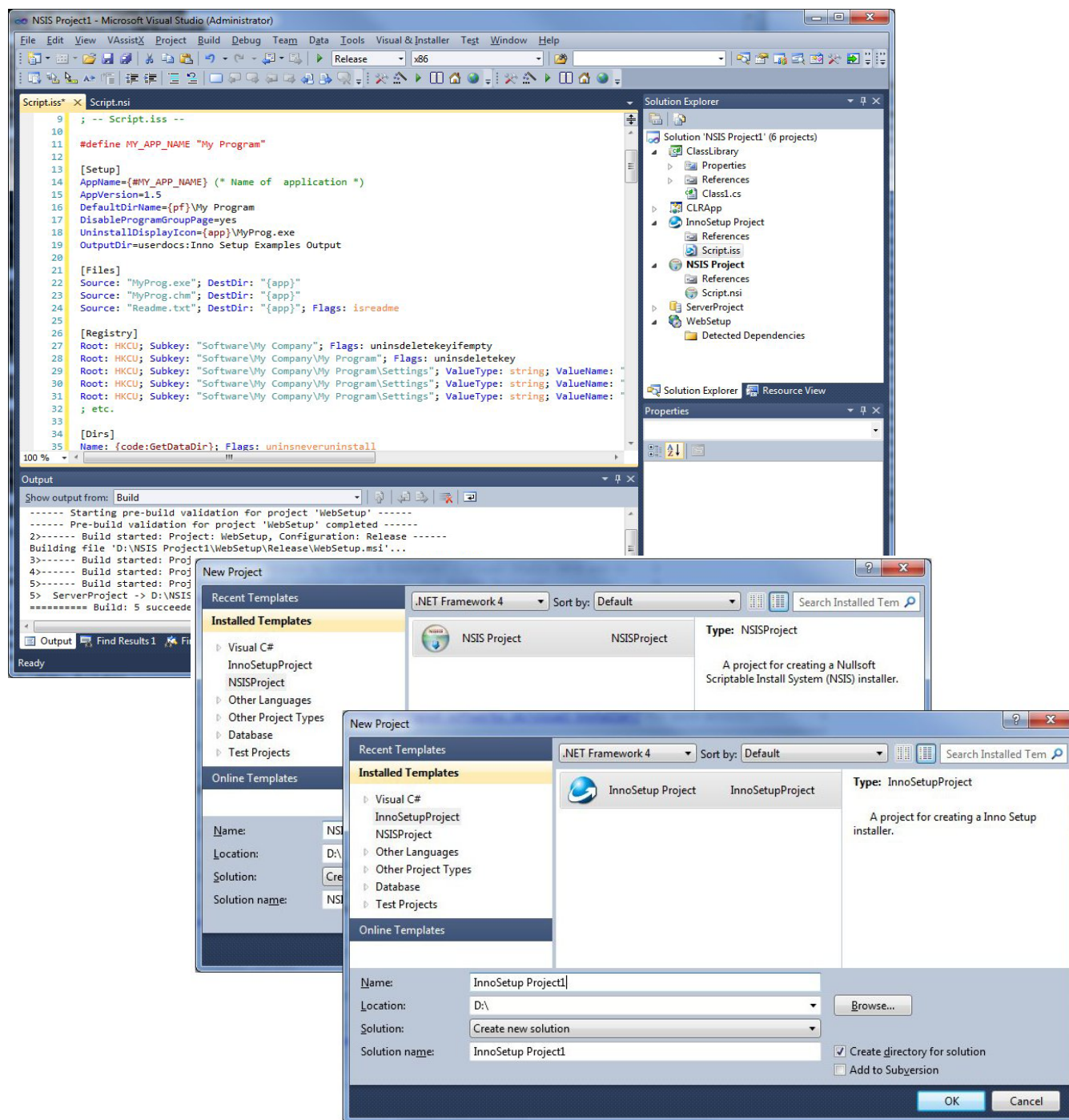


Visual & Installer je rozšírenie pre Microsoft Visual Studio, ktoré integruje inštaláčne systémy *NSIS* a *Inno Setup* do Visual Studio 2005 - 2015. Umožňuje vytvoriť inštalátory priamo v IDE, čím získavate možnosť pracovať s nimi ako s plnohodnotnými projektmi.

www.visual-installer.com



The image displays a screenshot of Microsoft Visual Studio (Administrator) with the 'NSIS Project1' solution open. The main editor shows the 'Script.nsi' file with the following content:

```
9 ; -- Script.iss --
10
11 #define MY_APP_NAME "My Program"
12
13 [Setup]
14 AppName={#MY_APP_NAME} (* Name of application *)
15 AppVersion=1.5
16 DefaultDirName={pf}\My Program
17 DisableProgramGroupPage=yes
18 UninstallDisplayIcon={app}\MyProg.exe
19 OutputDir=userdocs\Inno Setup Examples Output
20
21 [Files]
22 Source: "MyProg.exe"; DestDir: "{app}"
23 Source: "MyProg.chm"; DestDir: "{app}"
24 Source: "Readme.txt"; DestDir: "{app}"; Flags: isreadme
25
26 [Registry]
27 Root: HKCU; Subkey: "Software\My Company"; Flags: uninstalkeyifempty
28 Root: HKCU; Subkey: "Software\My Company\My Program"; Flags: uninstalkey
29 Root: HKCU; Subkey: "Software\My Company\My Program\Settings"; ValueType: string; ValueName:
30 Root: HKCU; Subkey: "Software\My Company\My Program\Settings"; ValueType: string; ValueName:
31 Root: HKCU; Subkey: "Software\My Company\My Program\Settings"; ValueType: string; ValueName:
32 ; etc.
33
34 [Dirs]
35 Name: {code:GetDataDir}; Flags: uninstalneveruninstall
```

The Output window shows the following build log:

```
----- Starting pre-build validation for project 'WebSetup' -----
----- Pre-build validation for project 'WebSetup' completed -----
2>----- Build started: Project: WebSetup, Configuration: Release -----
Building file 'D:\NSIS Project1\WebSetup\Release\WebSetup.msi'...
3>----- Build started: Proj
4>----- Build started: Proj
5>----- Build started: Proj
5> ServerProject -> D:\NSIS
----- Build: 5 succede
```

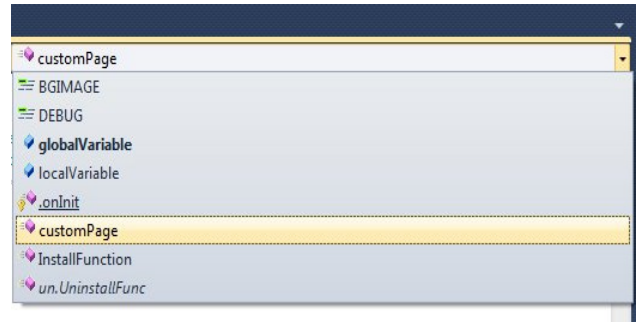
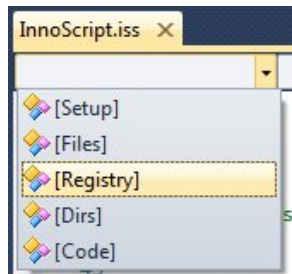
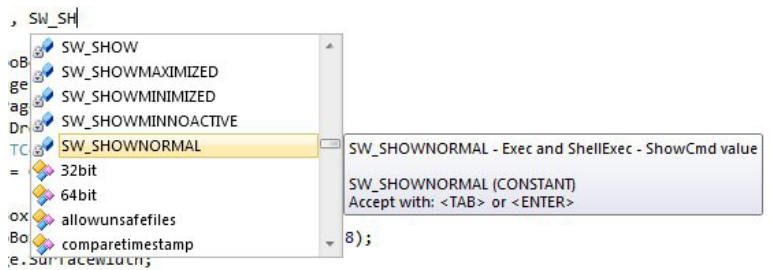
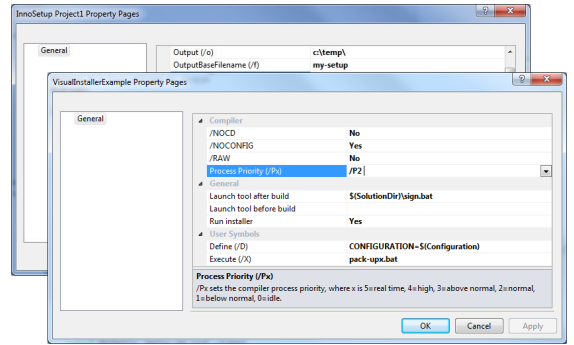
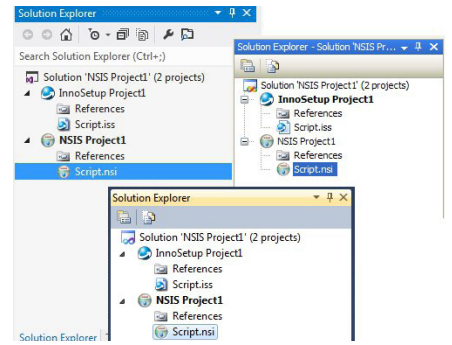
Two 'New Project' dialog boxes are overlaid on the bottom. The top one shows the 'NSIS Project' template selected, with the description: 'A project for creating a Nullsoft Scriptable Install System (NSIS) installer.' The bottom one shows the 'InnoSetup Project' template selected, with the description: 'A project for creating an Inno Setup installer.' The bottom dialog has the following fields filled in:

- Name: InnoSetup Project1
- Location: D:\
- Solution: Create new solution
- Solution name: InnoSetup Project1
- Create directory for solution
- Add to Subversion



Kľúčové vlastnosti

- › Pridáva nové typy projektov: inštalátory typu NSIS Project a Inno Setup Project
- › Plne sa integruje do IDE: pracuje s Visual Studiom 2005, 2008, 2010, 2012, 2013 a 2015
- › Zostavenie (Build) inštalátorov priamo s inými projektmi (C++, .NET, ...) v rámci jedného Solution
- › Pokročilé vlastnosti projektu (Project Properties) pre inštalčné projekty NSIS a Inno Setup
- › Zvýrazňovanie syntaxe (Syntax highlighting)
- › Podpora Microsoft IntelliSense: Parameter Info, Quick Info, Complete Word, Match Braces, ...
- › Funkcie Chod' do (Go To - Definition, ...) vrátane otvárania súborov jedným klikom (Go To File)
- › Predvytvorené Kúsky kódu (Code Snippets)
- › Rýchla navigácia (Navigation Bars)
- › Rady a tipy pre písanie skriptov, optimalizácia kódu
- › Rýchle skoky z okna chýb (Error List)
- › Regióny, Outlining
- › Dynamická nápoveda
- › Kompatibilita medzi všetkými verziami VS
- › Hľadaj Referencie
- › Ľahko prispôbitelné
- › Plná podpora pre verziovacie systémy (SVN, CVS, GIT, ...)
- › Konvertovanie VS Setup projektov (.vdproj) do NSIS alebo Inno Setup
- › Automatická aktualizácia
- › Podpora tímovej práce: rozdelenie projektu na moduly a jednotky
- › Dizajnér pre MessageBox dialógy
- › Definovateľné farby, položky, nastavenia
- › a iné...



```

1702
1786
1787
1788
1789
1790
1791
1792
1793
1794
1795
1796
    
```

```

MsgBox('Parameters Info is working!');

function MsgBox(Text: String, Typ: TMsgBoxType, Buttons: Integer): Integer;
Displays a message box.
    Text specifies the message to display.
    Typ specifies which icon to use in the message box.
    Buttons specifies which buttons to include in the message box. If
is specified or system resources are exhausted).
Typ: Parameter
Type: TMsgBoxType
    
```

